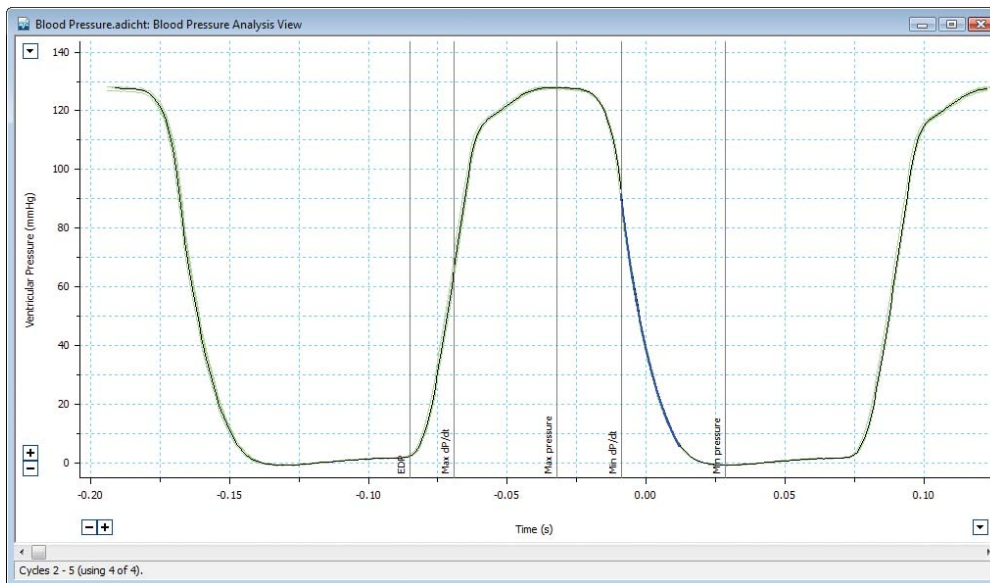


Blood Pressure Analysis

Blood Pressure Module for LabChart® & PowerLab®



Signal averaged left ventricular pressure waveform with key parameters. The average pressure waveform is shown in black and the individual cycles that constitute the average are shown in green.

The Blood Pressure Module for LabChart software automatically detects, analyzes and reports cardiovascular parameters from arterial or ventricular pressure signals. This can be done either online (during recording) or offline (after recording).

The Classifier View allows easy selection of pressure waveforms for analysis. Using the classifier, you can exclude pressure cycles that are contaminated by artifacts or feature abnormal cycle heights and durations. Specific pressure cycles with increased frequency and/or amplitude can be selected for analysis.

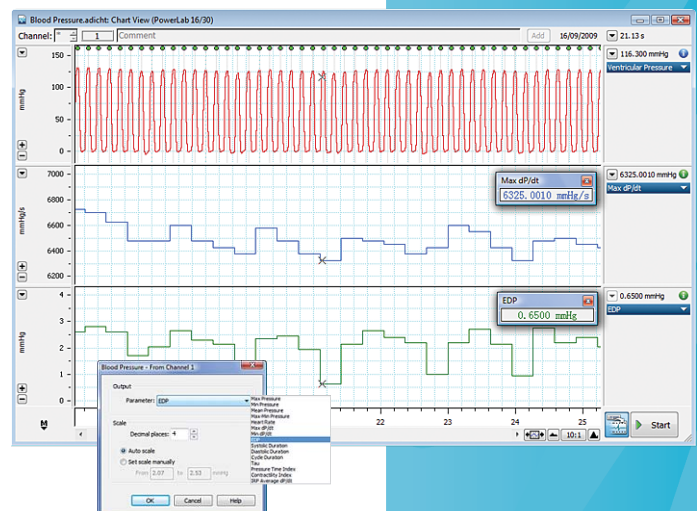
The Analysis View displays individual pressure cycles or an average of a specified number of cycles. Depending on the type of signal under investigation (ventricular or arterial), the software automatically labels key parameters. These include peak systolic and end diastolic pressure, dP/dt and many more. These measurements are automatically logged in the Table View for quick review and easy exporting.

LabChart also displays parameters calculated by the Blood Pressure Module as continuous data on separate channels. Raw data is unaltered by any calculation, ensuring that you can reanalyze recorded ventricular or arterial pressures at any time.

Features & Benefits

- Provides analysis of cardiovascular pressure from humans as well as large and small animals
- Averages any number of pressure waveforms
- Allows analysis of blood and cardiac pressure in real time
- BP Classifier allows fast detection and exclusion of atypical waveforms
- Logs pressure parameters to a table in real time
- LabChart displays pressure parameters as continuous data on separate channels

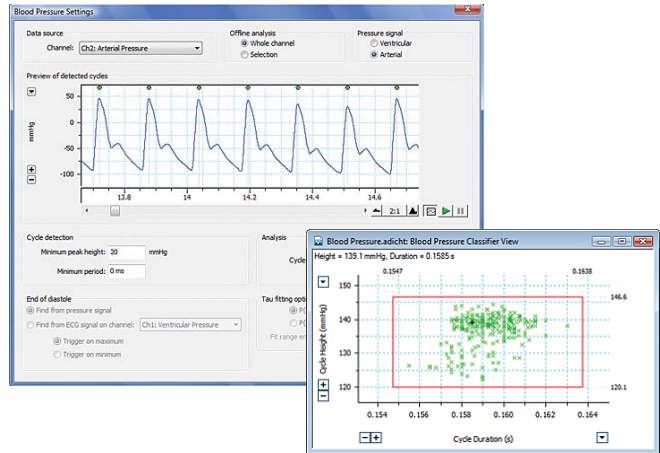
Below: Ventricular pressure recording (top channel) with maximum dP/dt and EDP calculated online (lower channels).



Blood Pressure Module

Detection & Analysis Settings

The Settings dialog allows easy configuration of detection and analysis parameters for ventricular or arterial pressure recordings. It includes averaging, cycle detection, analysis, end of diastole options and isovolumic relaxation (Tau).



Classifier View

The Classifier View allows cycles to be selected based on height and duration. The user can drag the edges of the selection box to include or exclude detected cycles in any analysis.

Analysis View

The analysis view displays every beat with any averaged waveform displayed in black. Vertical markers indicate arterial or ventricular cycle parameters. You can view each beat, or an average of successive beats, using the horizontal scrolling bar.

BP Settings dialog (top) and Classifier View (bottom).

Table View

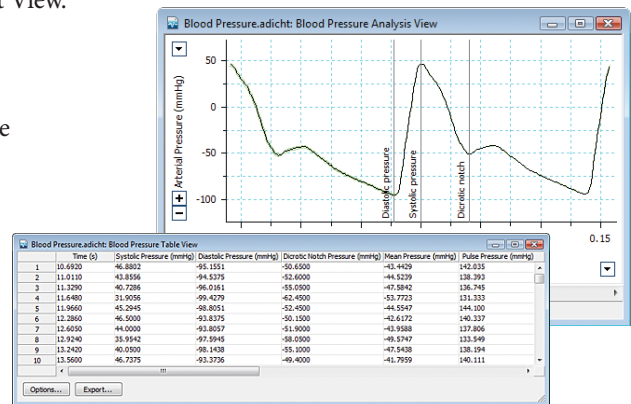
The Blood Pressure Module logs all calculated parameters in the Table View. Table rows are linked to the various LabChart windows. Highlighting a row will automatically show the corresponding beat in the Analysis View as well as the data in the Chart View.

Some of the calculated ventricular parameters

- Maximum Pressure
- Mean Pressure
- Maximum dP/dt
- End Diastolic Pressure (EDP)
- Isovolumic Relaxation
- Minimum Pressure
- Maximum-Minimum Pressure
- Minimum dP/dt
- Contractility Index

Some of the calculated arterial parameters

- Systolic Pressure
- Mean Pressure
- Ejection Time
- Diastolic Pressure
- Pulse Pressure
- Pressure at Dicrotic Notch



Analysis View with markers (top) and Table View with logged parameters (bottom).

Ordering Information

Blood Pressure Module	LabChart Pro	GLP Software*
MLS370/7 Blood Pressure Module (Windows®)	MLS260/7 LabChart Pro Modules (Software suite including all LabChart Modules)	MLS330/7 GLP Client (Windows®)
		MLS335 GLP Server (Windows®)

*Together with PowerLab and LabChart, the GLP Client and GLP Server facilitate GLP and 21 CFR Part 11 compliance.

Share your data with colleagues. Free LabChart Reader – download to view and analyze LabChart data.

PowerLab, MacLab, LabChart, LabTutor and LabAuthor are registered trademarks and Chart and Scope are trademarks of ADInstruments Pty Ltd. All other trademarks are the property of their respective owners. BP07/11

PowerLab systems and signal conditioners meet the European EMC directive. ADInstruments signal conditioners for human use are approved to the IEC60601-1 patient safety standard and meet the CSA C22.2 No. 601.1-M90 and UL Std No. 2601-1 safety of medical electrical equipment standards.



ADINSTRUMENTS.com

North America

Tel: +1 888 965 6040
Fax: +1 719 576 3971
info.na@adinstruments.com

United Kingdom

Tel: +44 1865 332 050
Fax: +44 1865 332 051
info.uk@adinstruments.com

Germany

Tel: +49 6226 970105
Fax: +49 6226 970106
info.de@adinstruments.com

North Asia

Tel: +86 21 5830 5639
Fax: +86 21 5830 5640
info.cn@adinstruments.com

South East Asia

Tel: +60 3 8024 5296
Fax: +60 3 8023 6307
info.sea@adinstruments.com

Japan

Tel: +81 52 932 6462
Fax: +81 52 932 6755
info.jp@adinstruments.com

South America

Tel: +56 2 356 6749
Fax: +56 2 356 6786
info.cl@adinstruments.com

Brazil

Tel: +55 11 3266 2393
Fax: +55 11 3266 2392
info.br@adinstruments.com

South Asia

IN Tel: +91 11 4306 5615
PK Tel: +92 21 3489 2518
info.in@adinstruments.com

Australia

Tel: +61 2 8818 3400
Fax: +61 2 8818 3499
info.au@adinstruments.com

New Zealand

Tel: +64 3 477 4646
Fax: +64 3 477 4346
info.nz@adinstruments.com

International

Tel: +61 2 8818 3400
Fax: +61 2 8818 3499
info.au@adinstruments.com

ISO 9001:2008 Certified Quality Management System

